

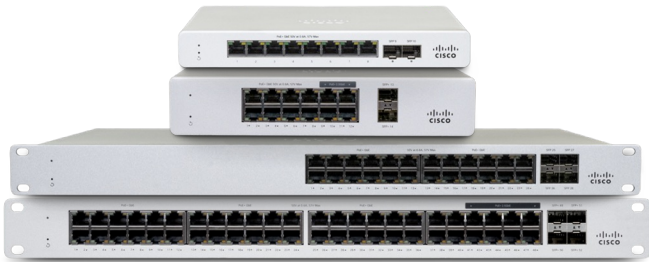
## MS130 AT-A-GLANCE

# Power More Possibilities With MS130

Deliver seamless user experiences with **more bandwidth**, **more flexibility**, and **less overhead**.



## Secure and frictionless connectivity starts at the switch.



Up to 2.5 GbE  
SFP/SFP+ options  
PoE+ options  
8/12/24/48 port

### More bandwidth

Supercharge uninterrupted experiences with **cost-effective mGig and SFP+** options.

### More flexibility

Adapt and power more new devices with **diverse port counts** and **PoE+ options**.

### Less overhead

Easy to adapt and scale with powerful, **centralized network management**.

**SWITCH TO CLOUD-FIRST NETWORKING**

## Meet the new MS130 access switch



### 8 and 8P

8x 1 GbE

SFP and PoE+ option



### 8X and 12X

2x/4x 2.5 GbE

PoE+; SFP+



### 24/24P and 48/48P

24x/48x 1 GbE

SFP and PoE+ option



### 24X and 48X

6x/8x 2.5 GbE

PoE+; SFP+

Versatile and compact desktop switches

Powerful and full-size rack-mount switches

## Scale your network securely with Meraki cloud-first switching

### Zero-touch provisioning

Pre-provisioning of hardware and easy plug-and-play deployments without dedicated on-site IT staff.

### Manage it all

Adopt Meraki products rapidly on one centralized, cloud-managed platform with unmatched visibility.

### Smarter at every layer

Centralized visibility of entire network and application recognition; get detailed telemetry on every connection path.

### Troubleshoot from miles away

Faster mean time to respond (MTTR) with powerful tools like cable testing, cycle port, and device reboot—from anywhere.

### Stay up-to-date

Easy-to-manage and schedulable firmware upgrades across the organization with auditable logs.

### Security without headache

Provide an additional layer of security based on the intent of the user, device, and application.<sup>1</sup>

1. **Future release:** MS130 mGig (-X) models are hardware-ready for the Adaptive Policy feature with a future firmware upgrade and advanced license.

LEARN MORE