



Cisco Meraki for Libraries

Meraki cloud-managed IT solutions are built to enable your library to provide essential services to your community and help bridge the digital gap.

Solution Highlights for Libraries

Creating digital equity

SOLUTION: Meraki high performance wireless is designed for high-density and high-range open spaces, without the high maintenance.

- Handle traffic increases with a network built to scale and optimized for a seamless user experience
- Schedule availability, throttle bandwidth hogs, block unwanted web traffic, and prioritize apps

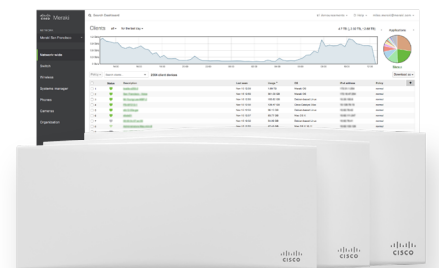


MR56

Expanding services within and beyond library walls

SOLUTION: Meraki can help with dependable outdoor Wi-Fi that can be deployed in a matter of minutes, then managed and monitored from anywhere.

- Deploy in open-air environments with enterprise-level security and traffic and location analytics
- Pair MG cellular gateway with any router downstream to deliver primary or failover cellular support



MR76, MR86, and MG21E

Meeting the demands of wired and wireless networks

SOLUTION: Meraki cloud-managed switches provide the essentials for building networks that help maintain seamless network service.

- Combine secure, scalable, robust performance with an intuitive management experience that requires no additional training
- Configure entirely from a web browser with zero-touch provisioning

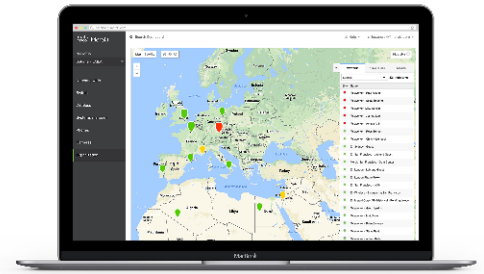


MS120 and MS225

Simplifying adoption of the latest technologies without burdening IT resources

SOLUTION: All Meraki devices are managed in an intuitive browser-based interface or app with quick deployment, unlimited scalability, and remote troubleshooting.

- Stay protected and up to date with seamless over-the-web firmware and security updates
- Isolate and fix issues in minutes with built-in remote troubleshooting tools



Meraki Dashboard

Extending your budget

E-rate is a discount program that provides eligible libraries with **discounts of 20%-85%** on broadband and voice services. A library's discount will match the discount of the school district nearest to them, which is based on poverty level and rurality.

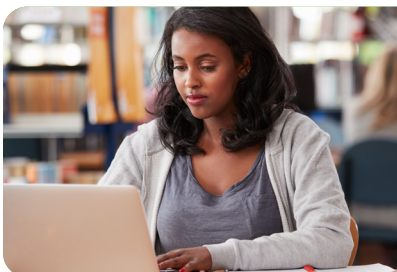
For **E-rate Year 24 (2021)** Category 2 (C2), which covers switches, routers, wireless, basic firewall, budgets have been reset. All libraries (both urban and rural) will have an estimated **\$4.50/square foot available** and the per-site funding "floor" will be **increased from \$9,200 per site to \$25,000** to use from 2021-2025.

Be sure to understand the E-rate milestones. It's a best practice to assess your technology needs throughout the year. To request C2 funds, you will first need to file a **Form 470** (RFP) and allow responses for a **minimum of 28 days**. After that set time, you will select the winning partner. Then you will be ready to file the **Form 471** during the E-rate filing window to request E-rate funds.

Hear from our customers

Learn how Cape May County Library was able to refresh their network with the support of E-rate →

Read how Brooklyn Public Library IT team can focus on providing additional services →



To learn more about E-rate and Meraki visit meraki.cisco.com/erate

Or email us at meraki-erate@cisco.com