

DATASHEET

Cisco Meraki for Government

Overview

Cisco Meraki for Government is a separate cloud-managed networking platform from our commercial solution that has been tailored to the specific needs of the U.S. public sector. It has full-stack capabilities such as switching, wireless, security & SD-WAN, and cellular gateways, and comes with our intuitive dashboard, allowing for remote management and simplified workflows for IT staff.

Eligible customers

Cisco Meraki for Government is available to entities meeting the following criteria:

- U.S. federal, state, and local government agencies
- U.S. educational institutions
- Holders of U.S. government contracts, provided they have valid commercial and government entity (CAGE) codes
- U.S. civilian entities possessing a federal mandate, where self-attestation is required for verification

Security

Security is top of mind for our public sector offering, and we have included some important features to keep your networks safe:

- FedRAMP Moderate ATO and StateRAMP
- Telemetry data stays on U.S. soil
- FIPS 140-2 validated cryptography for data at rest and data in transit
- All external communications are secured using TLS 1.2 and 1.3
- Continuously monitored security and compliance processes
- Session management to maintain cloud security and reduce access risks
- 99.99% uptime SLA
- 24/7 support by U.S. persons on U.S. soil



Products supported

We have a wide variety of products that are in compliance with the Trade Agreements Act (TAA) to meet your needs, no matter the size or configuration of your network.

Switching

- [MS120](#)
- [MS125](#)
- [MS130 / R](#)
- [MS355](#)
- [MS390](#)
- [MS450](#)
- [C9300x](#)

Wireless

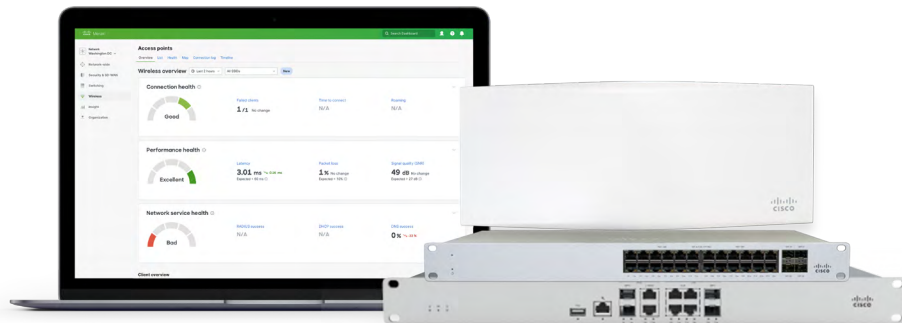
- [MR36H](#)
- [MR44](#)
- [MR46E](#)
- [MR56](#)
- [MR57](#)
- [MR76](#)
- [MR86](#)
- [CW9166I-MR](#)
- [CW9164I-MR](#)
- [CW9162I-MR](#)

Security and SD-WAN

- [MX67\(C/W\)](#)
- [MX68\(C/W/CW\)](#)
- [MX75](#)
- [MX85](#)
- [MX95](#)
- [MX105](#)
- [MX250](#)
- [MX450](#)

Cellular gateways

- [MG21/E](#)
- [MG41/E](#)
- [MG51/E](#)



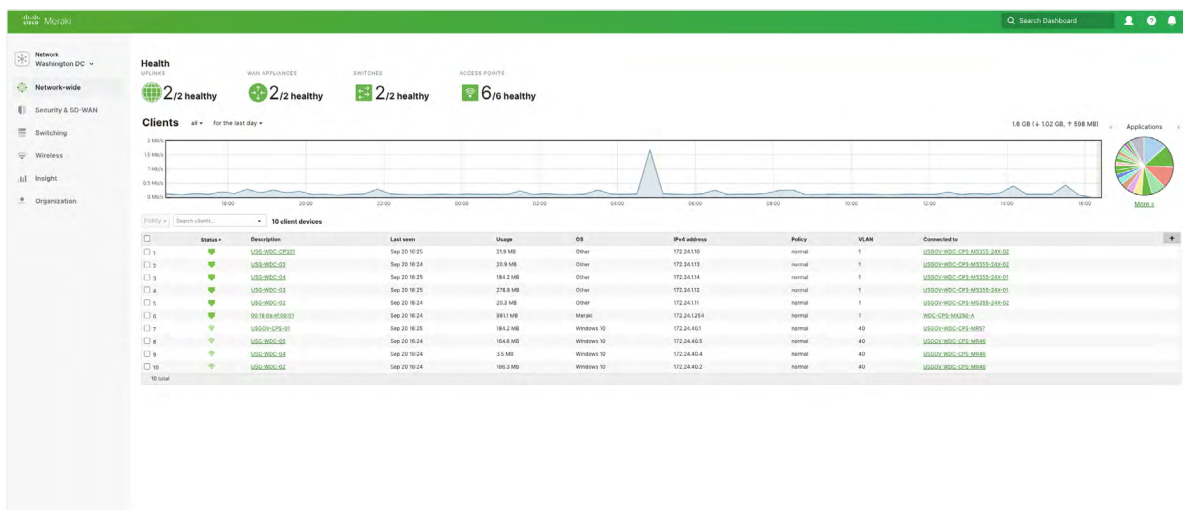
Licensing: Only co-term licensing is supported at this time.

Migration from the Meraki commercial cloud

For government customers currently using our commercial cloud offering, there are a few steps you will need to follow to transition to our government solution:

1. Create your Cisco Meraki for Government dashboard.
2. Create any configuration needed in that dashboard.
3. Remove any devices from the network/s in your Meraki commercial dashboard and unclaim them from your inventory.
4. Claim those devices in your Cisco Meraki for Government dashboard and add to the appropriate networks.

[Visit our documentation](#) for more information.



What's next?

Cisco Meraki for Government is already a complete full-stack solution, and we will be adding to the Meraki portfolio of solutions over time, as well as adding compatibility with other Cisco FedRAMP offerings.

Experience the dashboard today—[contact us](#)