

# Deploying Guest Wireless Access

## Meraki Wireless LAN Solution

Jed Lau  
Product Manager  
Meraki, Inc.



# Webinar Overview

1. Introduction
2. Free AP giveaway details
3. Guest WiFi motivations and considerations
4. Deployment strategies
5. Meraki's solution
6. Q&A

# Introduction

## Moderators

- 👤 Jed Lau- *Product Manager*
- 👤 Amy Zhou- *Marketing Manager*
- 👤 Kiren Sekar- *Product Marketing Manager*

## Attendees

- 👤 Over 1000 registrations!
- 👤 Please submit questions via text-chat
- 👤 Questions will be answered at end of presentation

# Introduction (cont)

- Meraki builds cloud-managed wireless access points for small-medium enterprises
- Over 13,000 customers worldwide
- #1 complaint of prospective customers is lack of guest wireless

# Free AP Details

- ☺ Meraki Indoor (802.11 b/g) access point, 3-year Enterprise Cloud Controller license
  - Must attend webinar in its entirety
- ☺ Can be used to provide guest access in a conference room, lobby, etc.
- ☺ Interested in 802.11n APs?
  - Free trials available
  - email [sales@meraki.com](mailto:sales@meraki.com)



# Why Provide Guest Wireless Access?

## 😊 Happier guests



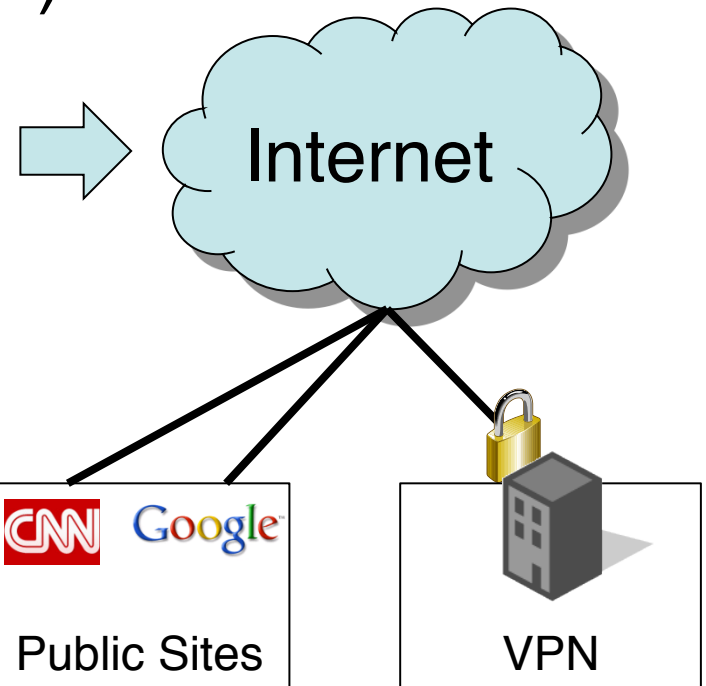
## 😊 Higher productivity

# What Is a Guest Wireless Network?



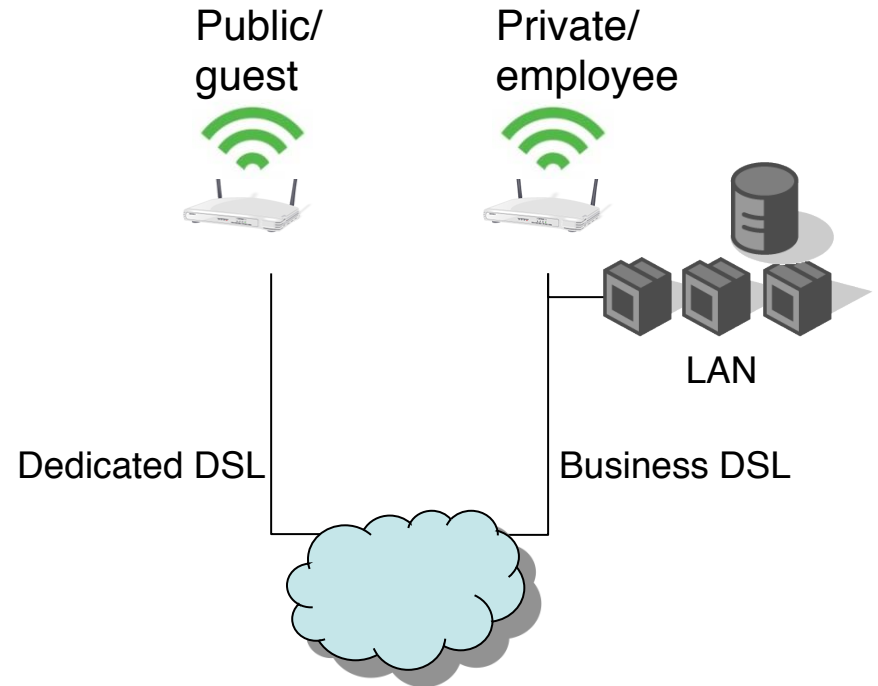
## Guest Wireless Network (SSID)

meraki.  
Welcome to jjj!  
If you already have an account on this network, sign in here:  
email   
password   
  
If you don't have an account yet, complete this form:  
name



# First Generation Guest Access

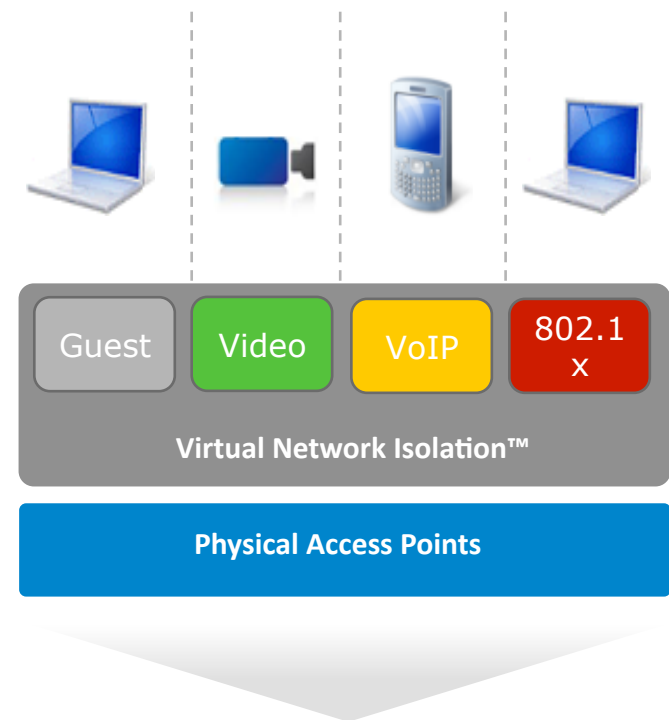
- 2 sets of access points
  - Public/guest network
  - Private/employee network
- Possibly 2 Internet connections
- Drawbacks:
  - More complex to manage
  - More expensive





# Second Generation Guest Access

- 1 physical set of APs
- APs broadcast multiple SSIDs (isolated virtual networks)
- A single shared wired infrastructure
- Benefits:
  - Less hardware
  - Easier to manage



Ethernet



# 3-Step Wireless Guest Management



1. Configure a guest SSID



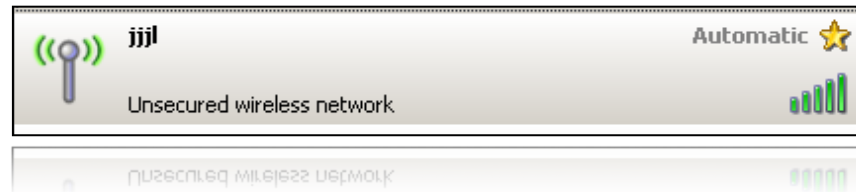
2. Manage guest accounts



3. Monitor guest usage

# Option #1: Open Network

No encryption, no authentication



## Pro:

- Easy for guests to connect

## Con:

- Hard to keep unwanted users off
- Vulnerable to abuse (objectionable content, launching viruses, etc.)

# Option #2: Pre-Shared Key (PSK)

## WEP or WPA2-PSK (WPA2-Personal)



### 👉 Pro:

- Easy for guests to configure

### 👉 Con:

- Key can be easily shared with unwanted users
- Key rotation applies to everyone
- WEP can be cracked (WPA2-PSK is recommended instead)

# Option #3: Username/Password Login

Display a splash page that asks for username/  
password credentials



The screenshot shows a Meraki splash page with the following content:

- meraki. logo with a green speech bubble icon.
- Header: Welcome to jjjl
- Text: If you already have an account on this network, sign in here:
- Form fields: email, password, and a sign in button.
- Text: If you don't have an account yet, complete this form:
- Form fields: name, email, and a sign up button.

## Pro:

- Guest credentials can be easily distributed
- Simultaneous access can be configured
- Entering username discourages abuse

## Con:

- Some wireless devices can't display a splash page

# Other Features on the Guest SSID

## 🗨️ LAN isolation:

- NAT mode with LAN isolation
- Bridge mode with VLAN tagging

## 🗨️ Content filtering

- Customizable splash page to display AUP

## 🗨️ Bandwidth limiting



Quick Demo

Quick Demo

# 3-Step Wireless Guest Management



1. Configure a guest SSID



2. Manage guest accounts



3. Monitor guest usage



# Managing Guest Accounts

## Options:

1. Don't (open network)
3. Rotate a pre-shared key (PSK network)
4. Configure guest accounts in an authentication server (splash page login via username/password)
  - a. On-premise authentication server (e.g., Active Directory, RADIUS)
  - b. Meraki-hosted authentication server



Quick Demo

Quick Demo

# 3-Step Wireless Guest Management



1. Configure a guest SSID



2. Manage guest accounts



3. Monitor guest usage

# Monitoring Guest Usage

## Operations:

- ☺ See guest usage
- ☺ Troubleshoot guests with connectivity issues
- ☺ Block unwelcome guests

**Monitor**

- Overview
- Maps
- Access points
- Clients**
- Logins
- Account activity
- Event log
- Rogue APs
- Summary report

**Configure**

**Help**

### Clients

Jan 5 20:00 to Jan 12 20:00 (3.2 hours ago) [Live updates](#)

Usage: 584.47 GB (464.71 GB received, 119.76 GB sent)

30 Mb/s  
15 Mb/s  
0 Mb/s

Jan 6 Jan 7 Jan 8 Jan 9 Jan 10 Jan 11 Jan 12

Search:   [Advanced search >](#) [Help](#)

1448 client devices Select: [All](#), [None](#)  [Display options](#) | [Download as XML](#)

	Description	Recent access point	Last seen	Usage	Access	IP address
<input type="checkbox"/>	1 USER-PC	<a href="#">ARA-2A-WAP3</a>	Jan 12 22:52	18.88 GB	normal	10.21.128.199
<input type="checkbox"/>	2 <a href="#">MAC002608027662</a>	<a href="#">VKE-2A-WAP3</a>	Jan 12 23:01	18.14 GB	normal	10.21.4.211
<input type="checkbox"/>	3 OWNER-PC	<a href="#">VKW-2A-WAP3</a>	Jan 12 22:57	11.88 GB	normal	10.21.0.113
<input type="checkbox"/>	4 <a href="#">mminkus Mac</a>	<a href="#">VKE-1A-WAP6</a>	Jan 12 22:49	11.54 GB	normal	10.21.7.118
<input type="checkbox"/>	5 <a href="#">MAC002332D74730</a>	<a href="#">ARE-2A-WAP1</a>	Jan 12 23:04	8.98 GB	normal	10.21.132.69
<input type="checkbox"/>	6 <a href="#">JoshC</a>	<a href="#">ARD-2A-WAP3</a>	Jan 12 22:53	8.00 GB	normal	10.21.132.75
<input type="checkbox"/>	7 <a href="#">OWNER-PC2</a>	<a href="#">ARD-2A-WAP4</a>	Jan 12 22:53	7.39 GB	normal	10.21.129.123
<input type="checkbox"/>	8 <a href="#">epitman Mac</a>	<a href="#">EM-3A-WAP2</a>	Jan 12 22:59	6.19 GB	normal	10.21.4.217
<input type="checkbox"/>	9 <a href="#">mus1sbutler6130</a>	<a href="#">HH-1A-WAP1</a>	Jan 12 23:06	5.84 GB	normal	10.21.136.115
<input type="checkbox"/>	10 <a href="#">MACINTOSH-35</a>	<a href="#">CLC-2A-WAP1</a>	Jan 12 22:52	5.81 GB	normal	10.21.73.69



Quick Demo

Quick Demo

# Guest Management with Meraki



## 1. Configure a guest SSID

### Meraki Features

16 SSIDs in 802.11n networks

Encryption:

- WEP
- WPA2-Personal
- WPA2-Enterprise

LAN isolation:

- NAT mode / LAN isolation
- Bridge mode / VLAN tagging

Content filtering

Bandwidth throttling



## 2. Manage guest accounts

### Meraki Features

- Authentication server: Meraki-hosted
- On-premise Active Directory/RADIUS

Authentication:

- Splash page login
- 802.1x

Administrator privilege levels



## 3. Monitor guest usage

### Meraki Features

Live monitoring of usage data

Detailed client information

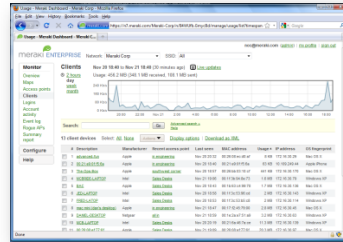
Google-like search capabilities

Extensive event logging

Dynamic user blocking



802.11n Access Points  
with secure Guest and  
Employee Access



Intuitive Centralized  
Management



Instant install, automatic  
updates and real-time support  
from the cloud

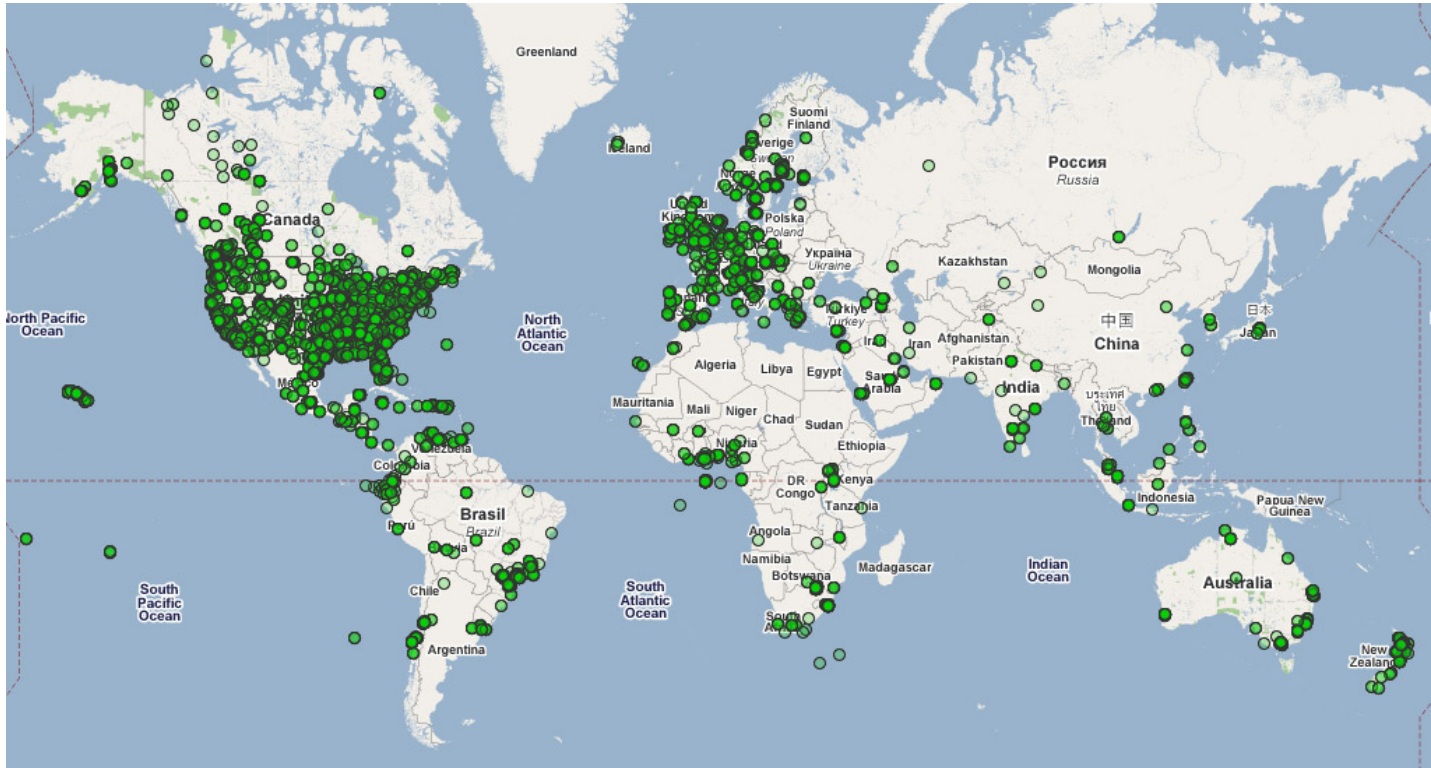
“The first enterprise wireless LAN you  
can get running in 15 minutes”

As featured in:



Meraki, Inc.





**13,000+** customers and **millions of users**



# 802.11n Access Point Family



Included at no additional  
cost with hardware

- ☺ Top of the line, self-configuring 802.11n APs with Gigabit PoE
- ☺ Built-in access control and Quality of Service (QoS) for secure employee access and firewalled guest access
- ☺ Enterprise class CPU serves dozens to hundreds of users

# Q & A



# Upcoming Webinars

🗨️ **Multi-Site WiFi Management &  
Remote Help Desk**

Wednesday, Jan. 27, 2010 @11am PST

🗨️ **Wireless Authentication**

Wednesday, Feb. 10, 2010 @11am PST

🗨️ **Upgrading to 802.11n**

Wednesday, Feb. 24, 2010 @11am PST

# Additional Resources

- 🗨️ Product details
- 🗨️ Case studies
- 🗨️ Videos
- 🗨️ Cost comparison tools

[www.meraki.com](http://www.meraki.com)

# Contact Meraki Today

- 🗨️ Free trials available
- 🗨️ Meraki staff and partners available to help plan wireless deployments and upgrades

[www.meraki.com/contact](http://www.meraki.com/contact)

Your free AP will ship shortly...  
Thanks for attending!



meraki 