

Setup Guide

Meraki Wall Plug

Welcome.

Here is your Meraki Wall Plug.



Meraki Wall Plug (US)
Faceplate screw, bracket & bracket screw

Meraki Wall Plug (EU)
2 brackets & 2 bracket screws

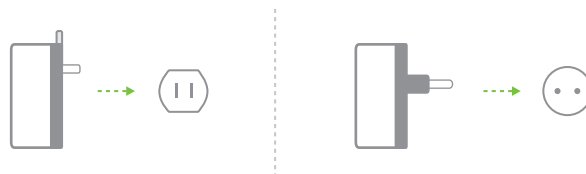
* Ethernet cable is not included.
You may also need wall screws and anchors for a secure mount.

Get started.

1. Plug it in.

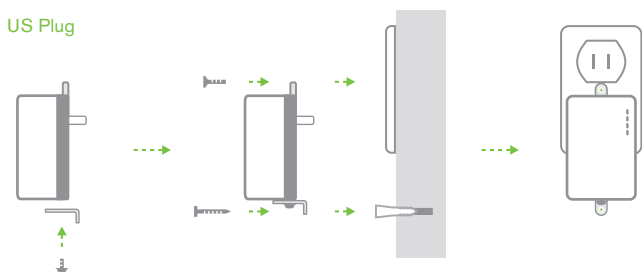
US Plug

EU Plug

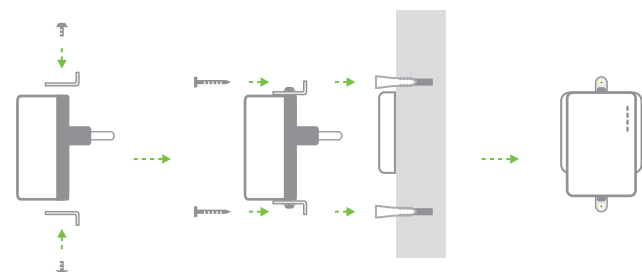


2. Secure your unit.

US Plug



EU Plug

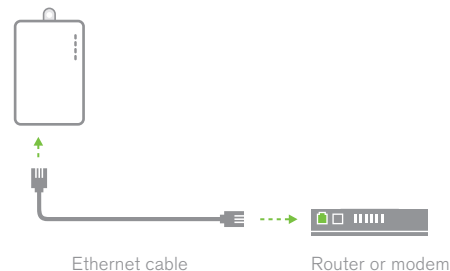


Wall screws and anchors (not included)

Recommended size for wall screws:	Diameter	Length
US	#6	1 inch
EU	M3	25mm

3. Create a gateway.

A gateway is a Meraki repeater connected to the Internet. Every Meraki network must have one or more gateways.



4. Deploy your repeaters.

Your Meraki Wall Plug has a range of about 150 feet (50 meters). When installing a new Meraki Wall Plug as a repeater, you can check its connection to the rest of the network using the signal strength LEDs.

Check signal strength using LEDs.

Signal strength



1 light: Fair
4 lights: Strongest



Flashing:
Weak signal



Moving lights:
Searching for signal

5. Configure your network.

Login to <http://dashboard.meraki.com>.

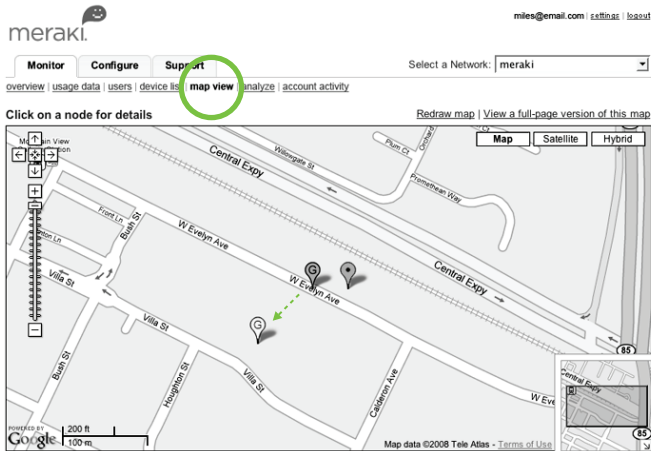
If this is your first time on Dashboard, create a new account.

Register all of your repeaters.

You will need your Meraki Order Number (found on your invoice) or the MAC address and serial number of each repeater (found on the back of each unit).

Place your repeaters on the map.

Select "Map View" and place each repeater on the map by clicking and dragging it to the correct location.



6. Test your network.

Confirm that you have good signal strength throughout your coverage area. You can use the signal strength meter on a laptop.

Congratulations.
You're done!



For more information, visit Meraki Support at <http://meraki.com/help>.

US – Federal Communication Commission Interference Statement

This device complies with Part 15 of the FCC Rules. Operation is subject to the following two conditions: (1) This device may not cause harmful interference, and (2) this device must accept any interference received, including interference that may cause undesired operation.

This equipment has been tested and found to comply with the limits for a Class B digital device, pursuant to Part 15 of the FCC Rules. These limits are designed to provide reasonable protection against harmful interference in a residential installation.

This equipment generates, uses, and can radiate radio frequency energy and if not installed and used in accordance with the instructions may cause harmful interference to radio communications. However, there is no guarantee that interference will not occur in a particular installation. If this equipment does cause harmful interference to radio or television reception, which can be determined by turning the equipment off and on, the user is encouraged to try to correct the interference by one of the following measures:

- Reorient or relocate the receiving device.
- Increase the separation between the equipment and receiver.
- Connect the equipment into an outlet on a circuit different from that to which the receiver is connected.
- Consult the dealer or an experienced radio/TV technician for help.

Any changes or modifications not expressly approved by the party responsible for compliance could void the user's authority to operate this equipment.

EU – EN 55 022 Declaration of Conformance

This equipment is shielded against the generation of radio interference in accordance with the application of Council Directive 89/336/EEC, Article 4a. Conformity is declared by the application of EN 55 022 Class B (CISPR 22).

For more information, visit http://meraki.com/collateral/product/meraki_wallplug_reg.pdf

Part Number: 280-07100